

DJ45

► *hp TIJ2.5 Inkjet coder*



Design for straightforward message entry and print control by a touch interface. One controller supports to two 12.7mm heads.

Dotjet Inc.



www.everdotjet.com
info@everdotjet.com

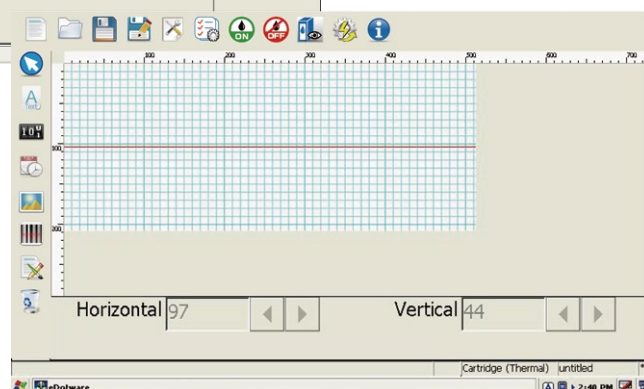
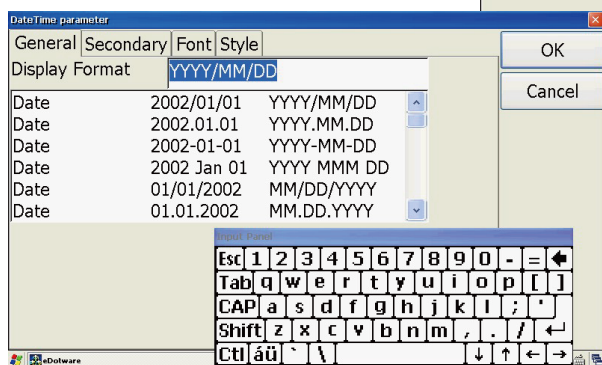
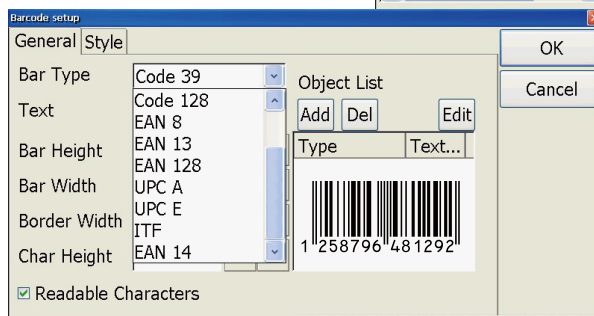
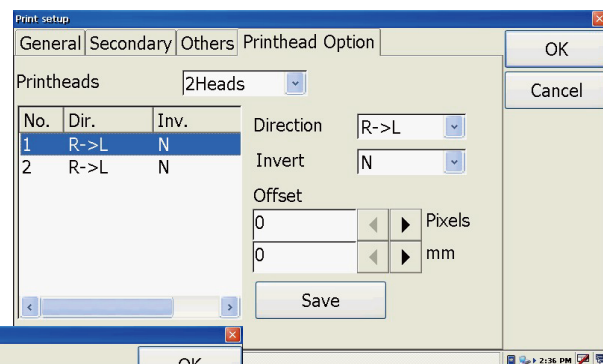


Tel: +886 4 2338 7066



No.10 Gaotie 2nd Rd.
Wuri Dist.
Taichung 41456 Taiwan

Inkjet
Technology by 



Available Languages English, Japanese, French, German, Spanish, Portuguese, Russian, Korean, Italian, Turkish, Chinese

Print Height : Selectable font size from 1mm to 12.7mm

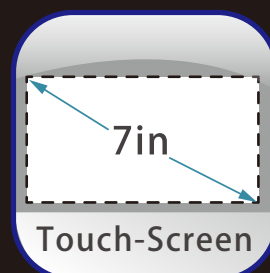
Print Line : 1 – 8 lines

Print Capability : Alphanumeric, logos, date/time, shift code, counter, lot box code

Barcodes EAN8, EAN13, EAN14, EAN128, UPCA, UPCE, CODE39, CODE93, CODE25, CODE128, PDF417, DATAMATRIX, QR CODE

External data print connected with RS232 interface

7" touch screen with friendly UI software provides quick access even for a beginner. Automatically identifies and selects the proper firing parameter to ensure the best print quality.



1

One controller supports to two hp TIJ2.5 print heads. The Anti-Shock mechanism is standard accessory to protect the print head on the production line.



Anti-Shock

3

A diverse range of inks available for coding onto various substrates even non-porous



5

Capability of connecting external data via RS232 to print.



RS232

2

External photocell instead of built-in sensor with flexibility to print to diverse cosing applications. Encoder is optional.



Photosensor



Nozzle

4

Cartridge hot-swap quick changeover. Clean changeover system maximizing the cartridge lifetime



6

Quick calculation of ink consumption of per printed message.

Electrical Requirements : AC 100V~240V, 50/60Hz

Operating Temperature : 5° C – 45° C (41° F – 112° F)

Weight : 1645g (excluding cartridge)

Dimensions : Controller (L/W/H) 205x140x68 (mm)

Print Head (L/W/H) 130x115x94 (mm)

Mounting Orientation : Horizontal or downside

Message Storage : Capacity Store up to 999 messages

Data Interface : RS232 & USB port

Ink Throw Distance : 6mm – 9mm, depend on the ink type.

Print Resolution & Print Speed : DJ45A – 30m/min at 300dpi (Max. print head cable 2 meters)

DJ45B – 60m/min at 300dpi (Max. print head cable 1 meter)

Max. print length : 1 meter

