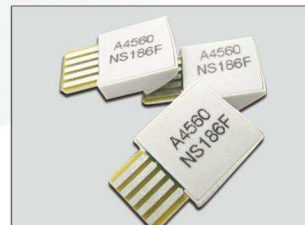
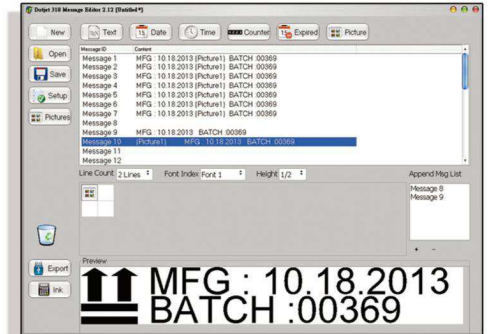


DJ310_PI28 Print Head high resolution ink jet printer

The most cost-efficient, user friendly, satisfaction with the most basic coding and marking need.

Key Features:

- ▮ Robust, console made by aluminum.
- ▮ Reliable, EMI/EMS certification.
- ▮ Simple setup and installation.
- ▮ User-friendly software-DJS300.
- ▮ Quick message editing and fast transmission of data to printer via USB.
- ▮ LCM module with 2 lines of 20 characters display, supports most languages.
- ▮ No mess, Automatic self priming and ink drainage with latest ink delivery system.
- ▮ Self cleaning print head nozzle.
- ▮ Quick replacement of print engine.
- ▮ System backup and restore to ensure data is fully secured.
- ▮ Security chip embedded in the ink cartridge.
- ▮ Maintenance free and with no wear & tear parts.
- ▮ Network printing up to 4 printers, editing and controlling through PC or DJ2001 controller.



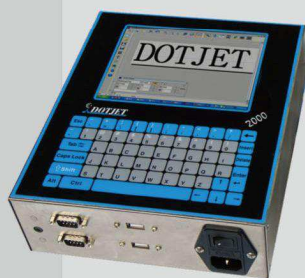
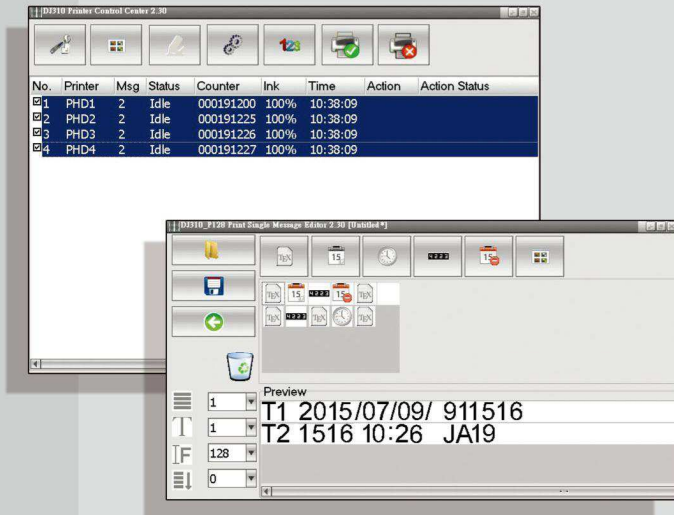
Print capability :

- Built-in two types of fonts; normal and bold.
- Automatic real time and date functions.
- Automatic best-before date calculation (date offset).
- Julia date printing.
- Automatic sequential numbering.
- Auto repeat printing.
- Graphic format supported using bitmap 1 bit file.
- Ink running cost calculation of printed message.

Technical Data & Specification:

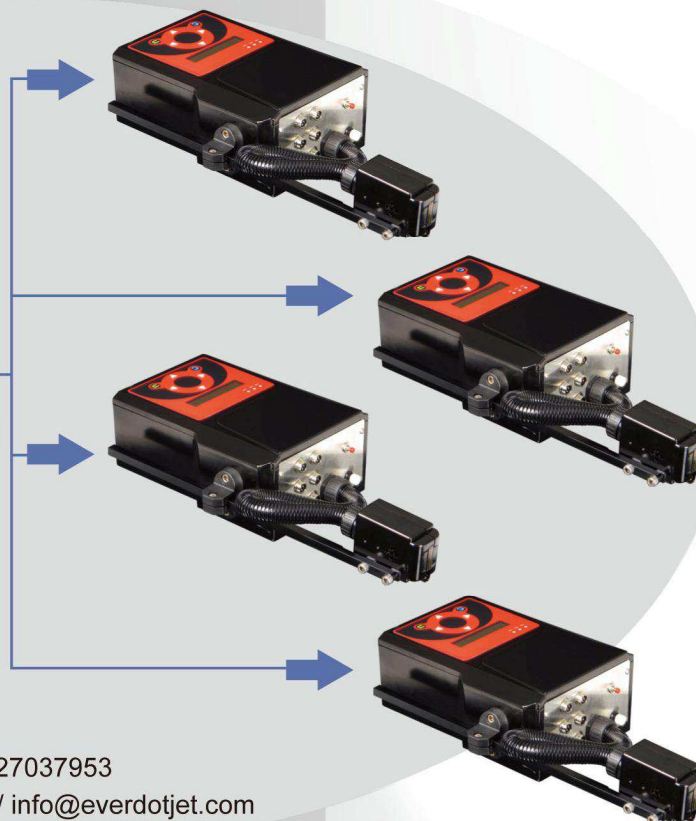
Xaar piezo printhead technology.

- Electrical requirement : AC 90V ~240V, 50/60 HZ
- Operating temperature : 0°C ~50°C
- Weight : 2.8 kgs(6.2 lbs) exclude cartridge and brackets
- Dimension : 230mm(L) x 85mm(W) x 95mm(H)
- Vertical resolution : 185 dpi
- Horizontal resolution : 200dpi
- LCM module display available for most languages
- Store up to 30 messages with built-in memory.
- Printing speed : 32m/minute at XL128/80 engine; 62m/minute at XL128/40
- Message length : Up to 512 characters
- Orientation : Horizontal and Vertical printing
- Print distance : 6.5 mm from the product surface.
- Print height /line: 17.5mm/1 line; 8mm/2 lines; 3mm/4 lines; 2mm/4 lines
- Substrate: Available for porous and non-porous .
- Ink supply : 250ml ink cartridge & 500ml for bulk ink supply system (optional)



DJ2001 Controller

RS232



Accessory:

Swim arm for anti-print head protection, Low ink alarm, external encoder, is optional. A slave sensor mounted is functional for traversing print. The third sensor mounted is functional for the print head pre-purge on quick dry ink application.

Dotjet Inc.

Taichung, Taiwan / 886-4-27037953
<http://www.everdotjet.com/> info@everdotjet.com